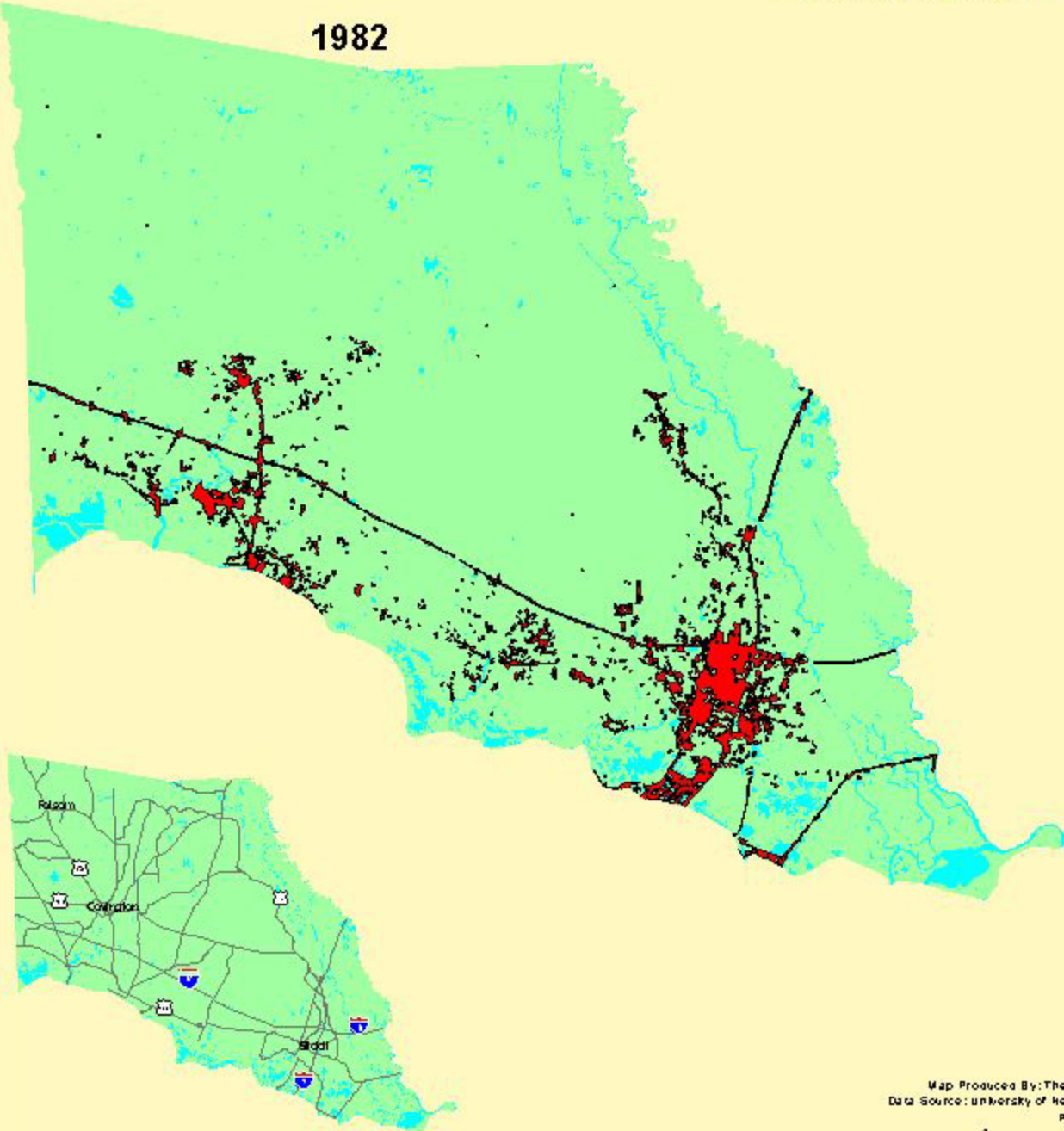
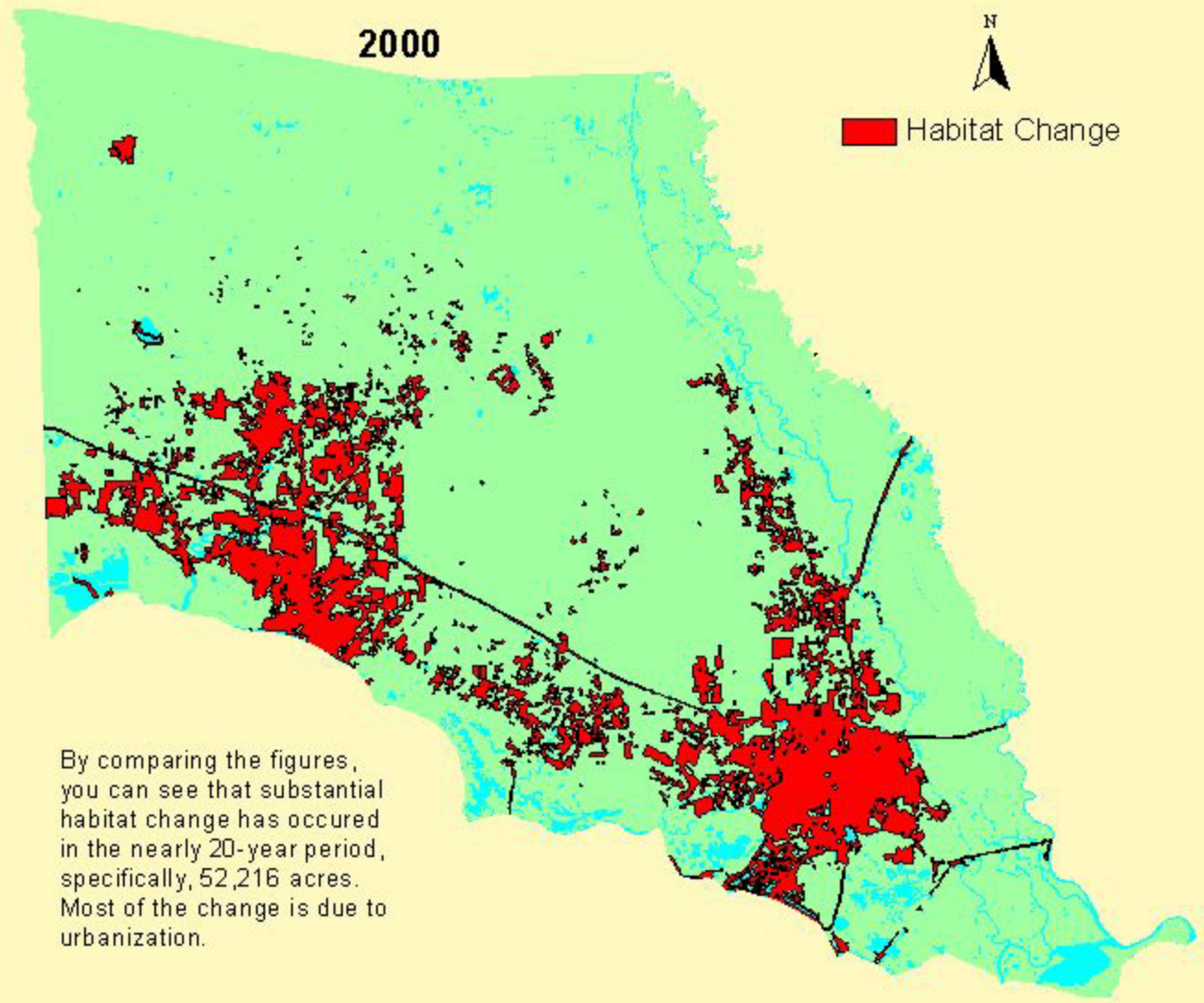


Habitat Change in St. Tammany Parish Between 1982-2000

1982



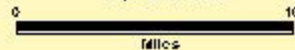
2000



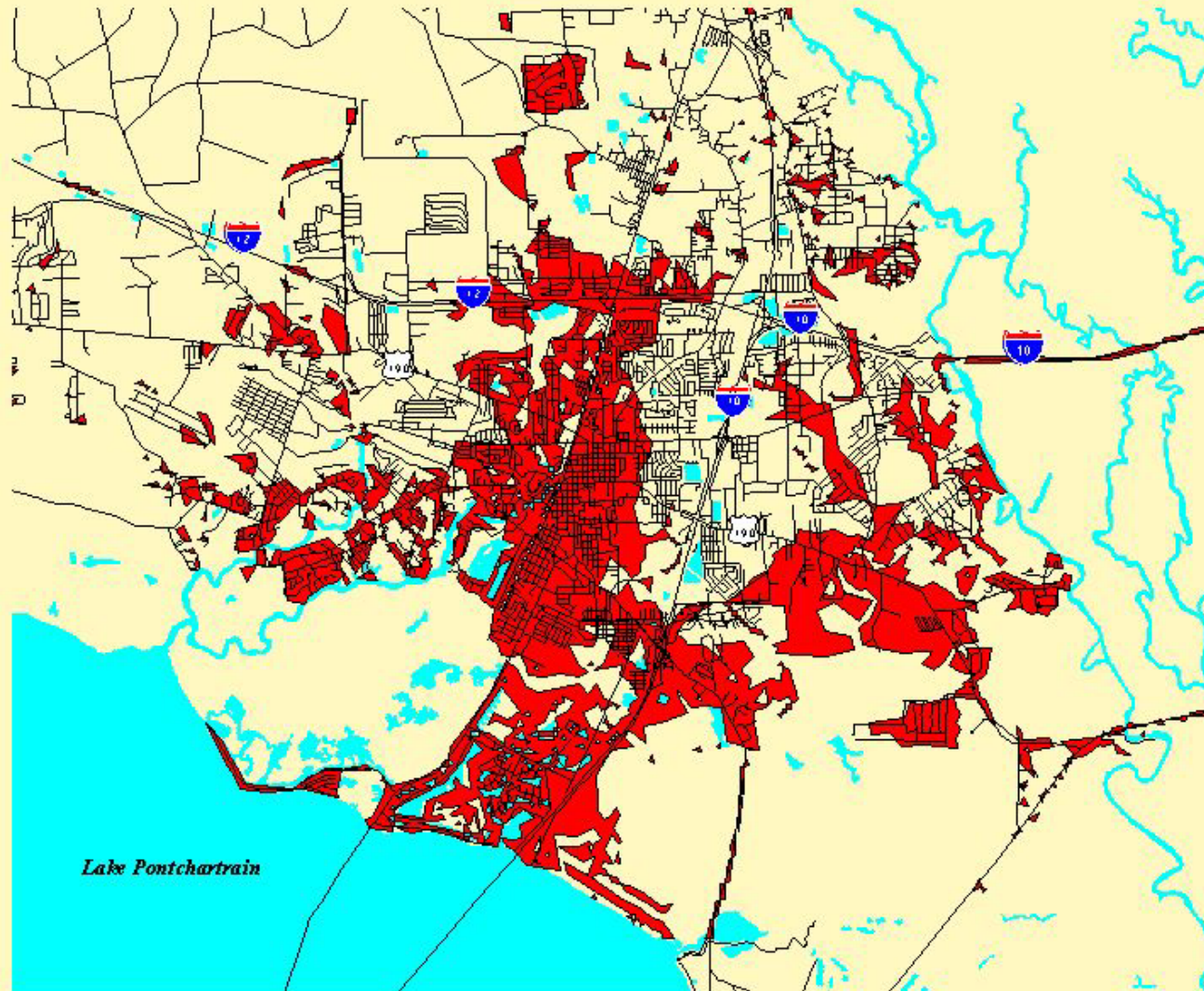
By comparing the figures, you can see that substantial habitat change has occurred in the nearly 20-year period, specifically, 52,216 acres. Most of the change is due to urbanization.






Map Produced By: The Lake Pontchartrain Basin Foundation
Data Source: University of New Orleans Coastal Research Lab and USGS
Prepared: 7/31/02



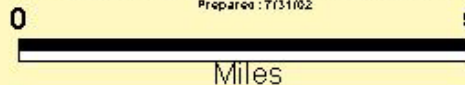
Habitat Change in the 100 Year Flood Plain of Slidell



-  Local Roads
-  Habitat Change in Flood Zone
-  Water Bodies

This map shows habitat change that has occurred within the City of Slidell's 100 year flood plain as of 2000. A critical function of wetland habitat is storing large amounts of water, which helps prevent flooding. As urbanization occurs in the flood plain, however, habitat is lost and flooding occurs more frequently.

Map Produced By: The Lake Pontchartrain Basin Foundation
Data Source: university of New Orleans Coastal Research Lab and USGS
Prepared: 7/31/02



UNIVERSITY OF
NEW ORLEANS

SAVE OUR LAKE
LAKE PONTCHARTRAIN BASIN FOUNDATION