

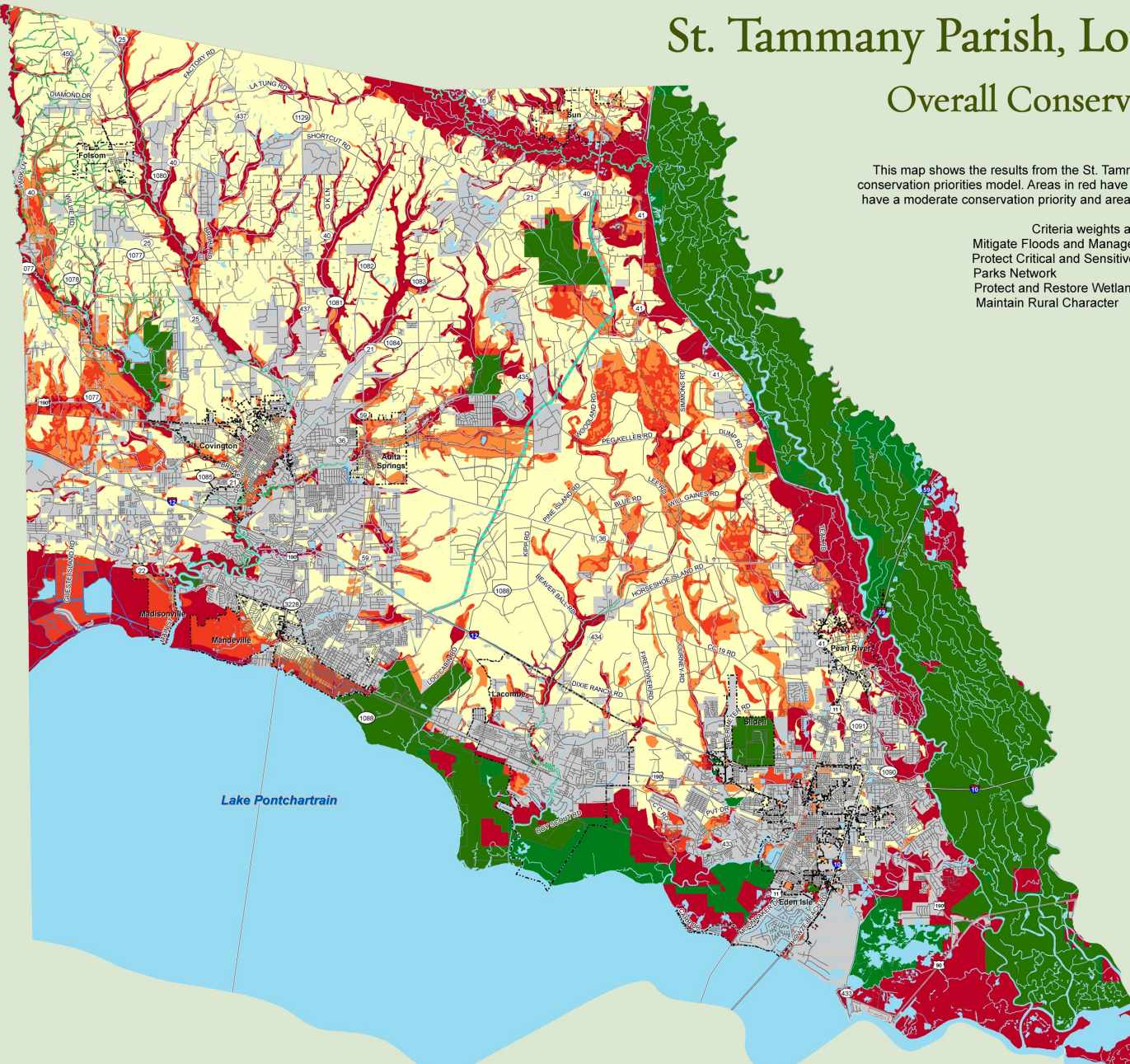
St. Tammany Parish, Louisiana Greenprint



Overall Conservation Priorities

This map shows the results from the St. Tammany Parish, Louisiana Greenprint overall conservation priorities model. Areas in red have a high conservation priority, areas in orange have a moderate conservation priority and areas in yellow have a low conservation priority.

| | |
|---------------------------------------|-----|
| Criteria weights are as follows: | |
| Mitigate Floods and Manage Stormwater | 26% |
| Protect Critical and Sensitive Areas | 26% |
| Parks Network | 25% |
| Protect and Restore Wetlands | 18% |
| Maintain Rural Character | 5% |



Legend

- City Boundary
- Parks and Open Space
- State Scenic River
- Developed Lands
- Waterbodies
- Streams
- Canals

Transportation

- Interstate
- Highway
- Major Roads
- Local Roads
- Proposed Highway 3241

Overall Conservation Priorities

- High
- Moderate

Greenprint Steering Committee Chairman:
 Jean M. Champagne
 Special thanks to the following data providers:
 St. Tammany Parish, USGS, The Nature Conservancy,
 Lake Pontchartrain Basin Foundation,
 Louisiana Natural Heritage Program and ESRI.
 Map created by the Trust for Public Land
 on February 7, 2007.
 Created in ArcMap 9.1b
 Map Projection: NAD 1983 State Plane
 Louisiana South FIPS 1702 Feet
 TPL, The Trust for Public Land, and The Trust for Public Land
 logo are trademarks of The Trust for Public Land.
 Copyright © 2006 The Trust for Public Land.
 www.tpl.org

Information on this map is provided for purposes of discussion and visualization only.